

WHY CHOOSE

Scanning Electron Microscopy (SEM)

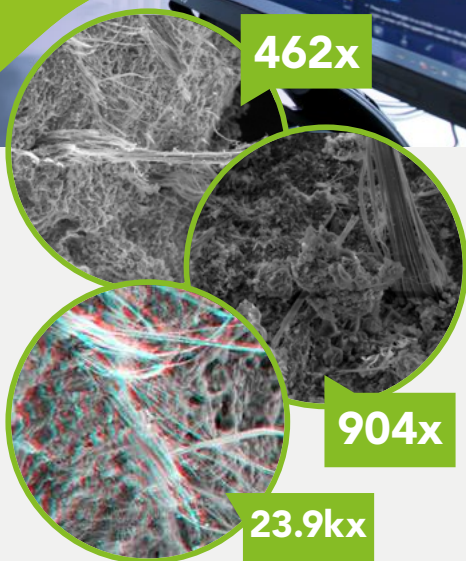
When should I use SEM?

- ▶ When discrimination between asbestos and non-asbestos fibres is needed to provide definite results where standard techniques are conflicting
- ▶ Built environments assessments to low fibre concentration
- ▶ Contaminated land exposure assessment
- ▶ When undertaking asbestos remediation work that involves shot blasting (also known as “quilling”) techniques to ensure personal exposure monitoring can be achieved.

Take Control

Don't Leave Asbestos Levels to Chance.

Choose Lucion's UKAS-Accredited Industry-Leading SEM Air Monitoring for Confident Decision Making.



What will the results show?

Concentrations of:

- ▶ Serpentine asbestos (chrysotile)
- ▶ Amphibole (crocidolite, amosite and other rare asbestos types)
- ▶ Inorganic fibres ie: MMMF such as rockwool
- ▶ Calcium sulphate fibres eg. gypsum



Want to know more? Visit:
luciongroup.com/services/sem-analysis

